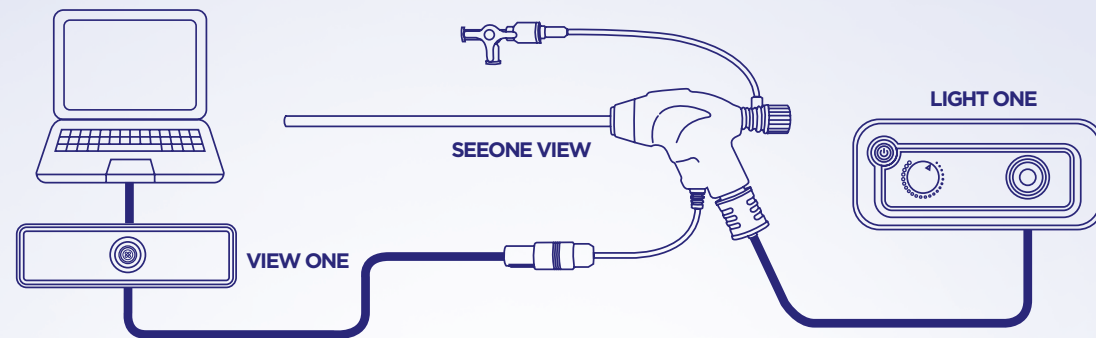


Configuration of SEEONE VIEW



View One Specification		Light One Specification	
Type	Image processing device	Type	Endolight
Size	150X140X45	Size	210X255X110
Resolution	160k (400x400 pixel)	Power Supply	Voltage 100-240VAC
Power Supply	Voltage	Frequency	50/60Hz
		Power	60W (15A)
Cable	Video	LED	CCT range 6500k (Cold white)
	Type	Brightness	0~100
	USB C 2.0 compatible	Fiber optic	2m
		Power	1.5m

SEEONE VIEW

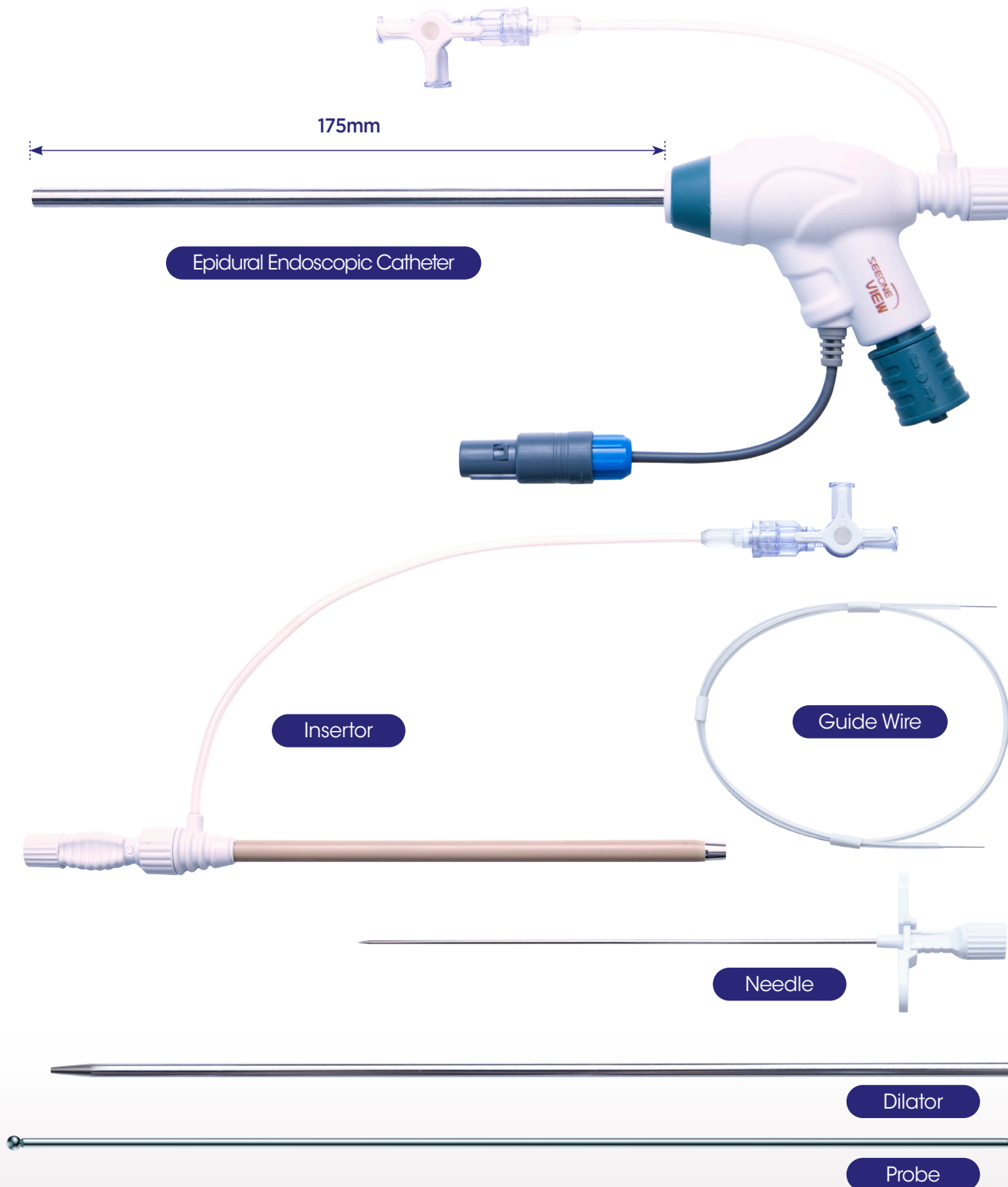
Epidural Endoscopic Catheter System

- Microendoscopic camera with high resolution & 160K
- Accurate treatment with visualization
- Minimally invasive

SEEONE VIEW Epidural Endoscopic Catheter System

SEEONE VIEW is a micro-endoscope system with 160K high-definition camera, working channel and optical fiber for LED light.

It provides real-time images using the high-definition camera by delivering light supplied from light source through optical fiber. Therefore, the largest benefit of SEEONE VIEW is that users can directly check the region of lesion and make a precise diagnosis and treatment. Moreover, drugs can be injected through the working channel.



Features



High-Resolution

High Resolution Camera

The high-resolution enables precise diagnosis and surgical operation, with more rapid access to lesions and reducing surgery time

Safe

Minimally invasive

Minimum incision to reduce pain and recovery time.

Accurate treatment with visualization and illumination

Provides superior images enabling more safe operation.

Easy

Easy-to-use program

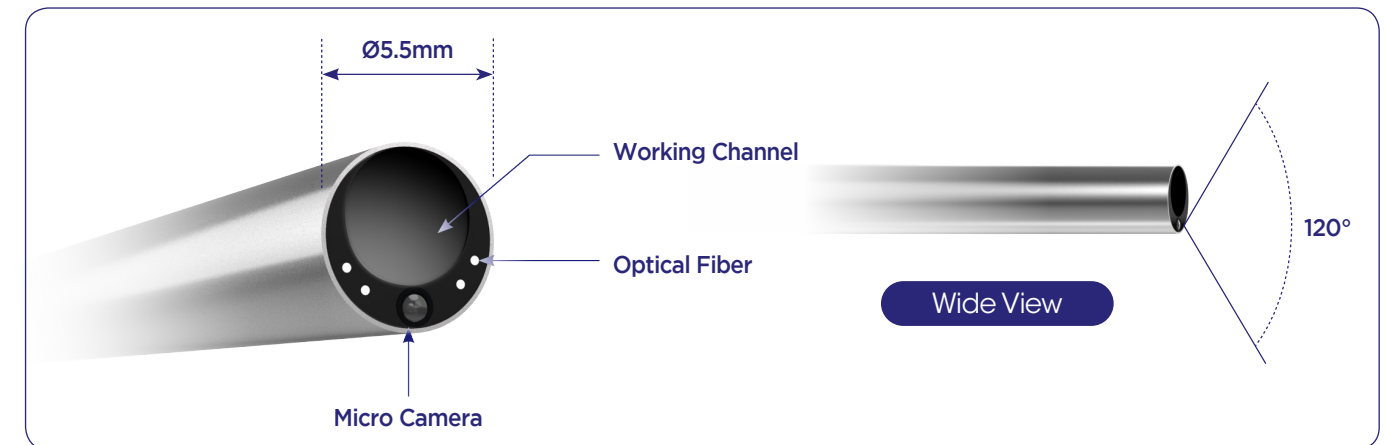
It uses a dedicated program

Easy-to-use ergonomic design

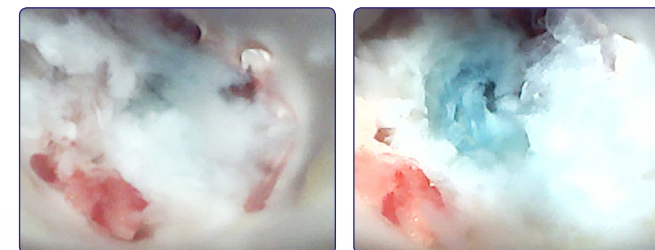
Ergonomic handle design easy to use

View device for illumination intensity control

Convenient for users to directly adjust illumination intensity on the view.



Optimal image quality



Model Spec

Epidural Endoscopic Catheter	
Type	Endoscope
Endoscope Diameter	Ø5.5mm
Working Channel Diameter	Ø3.0mm
Angle of View	120°
Angle of Curve	0°
Effective Pixels	160,000 (400 x 400)